

TESLA



Solar

Quantity: 24 Panels

System Size: 7.56 kW

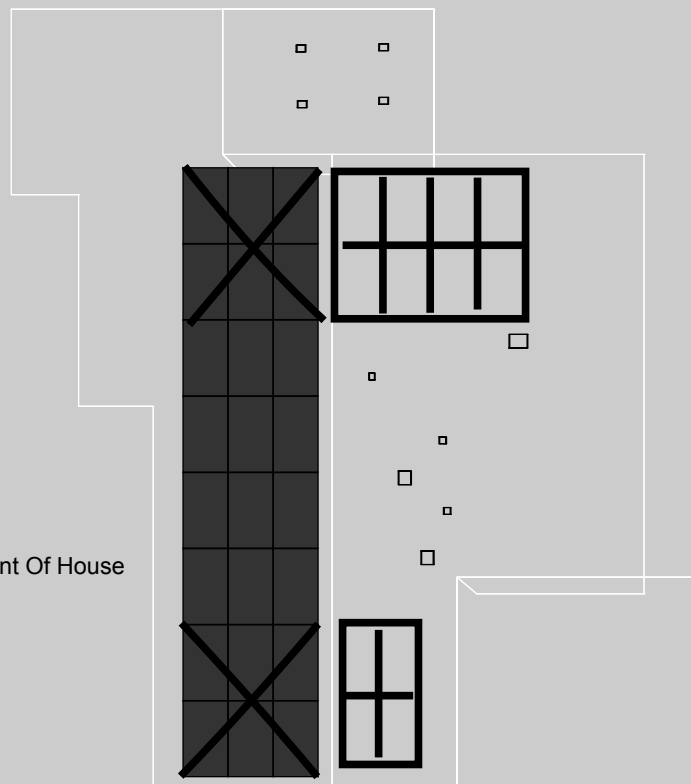
Est. Annual Production: 10416.38 kWh

Equipment Location

Your solar inverter(s) and any additional equipment will be installed near your utility electric meter.

At the beginning of installation, the Tesla crew lead will discuss with you the exact location based on your preference and install feasibility.

Front Of House



LEGEND

Solar Panels



Rooftop vents, skylights,
chimneys, and HVAC

