

### **3. Safety instructions**

The installation may only be carried out by trained specialist personnel. The installation is carried out with the vehicle disconnected from the power supply, e.g. by disconnecting the battery from the on-board power supply (please observe the vehicle manufacturer's instructions). The use of the active suspension control is exclusively suitable for the vehicle types and model series mentioned in these instructions and may therefore only be used with those vehicle types and model series! Installation is carried out exclusively according to the steps shown in these installation instructions. Only the connections specified in these instructions may be used. Cete Automotiv GmbH accepts no liability for damage caused by improper installation, the use of unsuitable connections or installation in vehicle types and models not intended. The manufacturer reserves the right to change components without giving reasons. Errors and omissions excepted.

### **4. General information**

Please follow the installation steps shown here. When developing the product, we paid particular attention to safety, ease of use, design and innovative development in order to offer the user a good product. Despite the greatest care, however, incorrect or improper installation, use or operation may result in damage to property. Depending on the product and its intended use, it may be necessary to check the legal regulations of the respective country before initial commissioning.

In the event of warranty claims, the device must be returned to the seller in its original packaging, with the relevant proof of purchase and a description of the defect or fault. Please observe the return policy. The statutory warranty regulations apply. The warranty claim and the operating permit expire through: unauthorized modifications to the device and its accessories, own repairs to the device, use of force, improper use, opening of the housing.

## 5. Note

Please note that, according to StVZO (*Strassenverkehrs-Zulassungs-Ordnung* [German Road Vehicle Registration Regulation]) this is a component subject to registration. Please undertake such registration as soon as possible.

The pictures shown in these instructions are merely an aid or an orientation for the removal of the respective components. Please remove the facings/panels/coverings according to the repair guide of the respective manufacturer.

In addition, we recommend that you recalibrate the Driving Assist depending on the selected lowering in order to ensure that all components remain fully functional.

## 6. Technical Specifications

Model designation:	Active Suspension Control
Operating temperature:	-40°C to 85°C
Operating voltage:	7 V to 20 V
Average current consumption:	250 mA

[CE mark]

## 7 Installation location

### 7.1 Tesla S



#### Step 1)

Open the driver's side door.

The control unit for the air suspension is located under/behind the center console.



#### Step 2)

Carefully start to unclip the center console cover.

Use wedge/wedging tools as an aid.





**Step 3)**

Repeat the process on the passenger side.



**Step 4)**

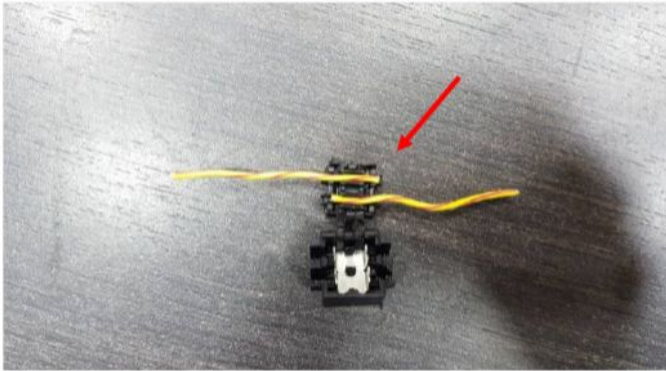
Locate the control unit for the air suspension.



Unlock the plugs and start with the electronic assembly.

Always keep the bypass plug in the vehicle for cases where the control unit is to be temporarily removed without having to remove the complete wiring harness.

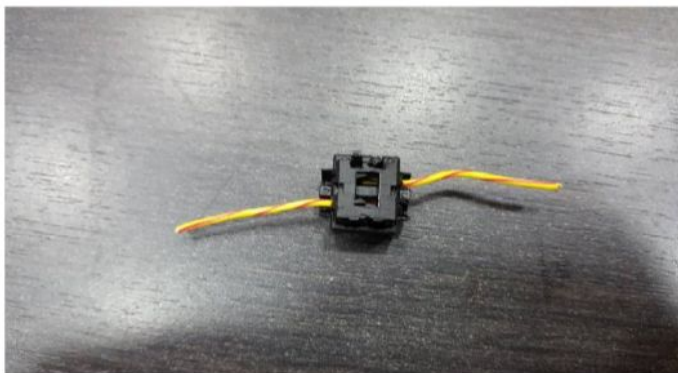
## 8. Electronic assembly



### Step 1)

We have included adapters with the delivery, so you don't have to solder every single wire; you just have to squeeze them.

Finally, only the ground wire and the 12V wire are soldered in parallel.



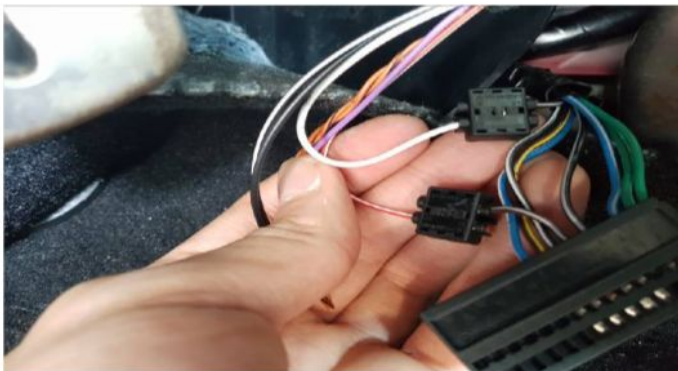
### Tip)

Use the adapters shown for easier installation.

Place the two ends to be connected in the black guide so they are secured.



It is essential to secure the adapter with pliers.





## Step 2)

The control unit has two connectors.

The main connector 1 is the wider connector.

You have to cut the corresponding line from the vehicle and then connect it according to the table.

It is important that you do NOT confuse the vehicle side with the control unit side.

Please go according to the pin assignment. Please contact us if anything is unclear.

The installation should be done by a workshop.

Control unit side => points in the direction of the colored contact housing.



Pin assignment ASC 18-pole housing			
Red	12V - permanent positive (RD/WH) 2-4	Brown	Ground BK/WH 2-13
Orange/black	Green/white 1-28	Orange/brown	Green 1-29
Violet	RD-WH 1-1	-	-
-	-	-	-
Blue	BN 1-19	Blue/white	
Green	GN 1-36	Green/white	
Black	WH 1-16	Black/white	
White (50 cm)	GY 1-33	Red/white	
Connect on vehicle side		Connect on control unit side	